

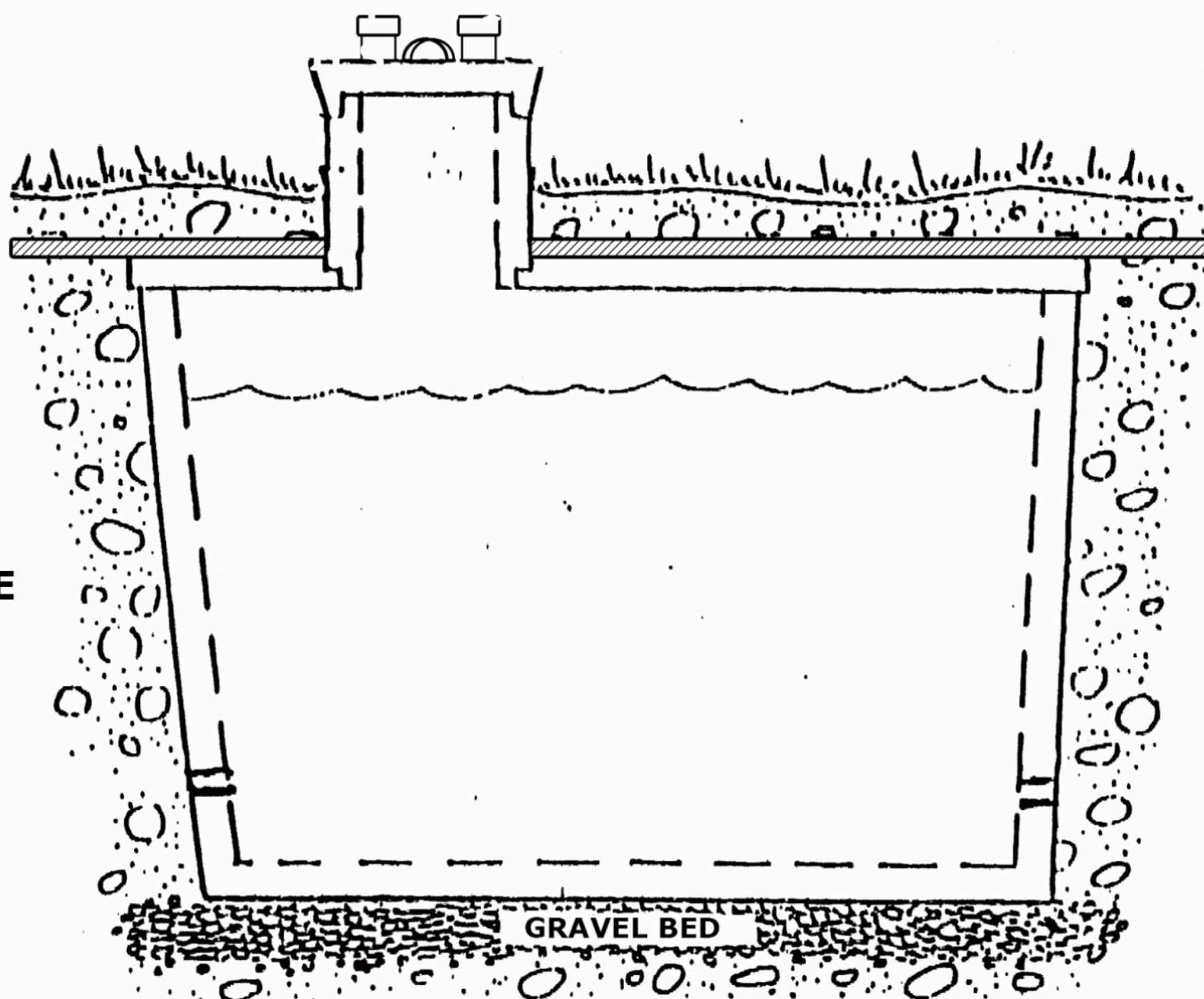
PRECAST CONCRETE WATER CISTERNS

THEY INCLUDE:

- 1.25" BRASS COUPLINGS (CAST INTO BOTH ENDS)
- CONCRETE ACCESS RISER (24" ID X 30" TALL)
- STEEL MESH REINFORCEMENT
- FIBER REINFORCED CONCRETE

WE ALSO HAVE:

- 1.25" BRASS FITTINGS
- 1.25" HDPE 250PSI PIPE



NOTE: WE RECOMMEND A 4-6" GRAVEL BED TO ENSURE EVEN WEIGHT DISTRIBUTION.

	1500 GALLON CISTERN			600 GALLON CISTERN (Special Order Only)		
	LENGTH	WIDTH	HEIGHT	LENGTH	WIDTH	HEIGHT
Hole Dimensions	126"	90"	78"	108"	72"	78"
Tank Dimensions	112"	76"	64"	92"	55"	43"

THE FAGENSTROM CO.



2101 NORTHWEST BYPASS
P.O. BOX 2623
GREAT FALLS, MT 59403

PHONE: (406) 761-5200
FAX: (406) 727-6532

WWW.FAGENSTROM.CO

FAGENSTROM@GMAIL.COM

WE ALSO MANUFACTURE A LARGE SELECTION OF SPECIALTY CONCRETE PRODUCTS INCLUDING:
• STEPS • MANHOLES • SEPTIC TANKS • SAND/OIL INTERCEPTORS • PARKING CURBS

"QUALITY PRODUCTS WITH PERSONALIZED SERVICE"
BRETT, KIM, KURT AND GREG FAGENSTROM

THE FAGENSTROM CO.

P.O. Box 2623
GREAT FALLS, MT 59403
(406) 761-5200

Recommended Cistern Installation Guidelines

1. Cisterns should be located:
 - In a non-traffic area.
 - At least 10 feet from any foundation.
 - 50 feet from wastewater treatment drain fields.
 - 25 feet from septic tanks.
 - Away from tree, root or brush zones.
 - Where there is positive drainage away from the cistern.
2. The recommended hole dimensions for our cisterns are printed on the opposite page.
3. The cistern hole should have a firm and level base of appropriate bedding material.
4. High-density insulation board can be installed on top of the cistern for an additional frost barrier.
5. The cistern must be backfilled and compacted before filling with water.
6. The access riser should be at least 12 inches above the finished grade.
7. Don't overfill the cistern to where the water goes up into the risers.
8. The cistern should be inspected and cleaned on a regular basis.